



## DOLCE

### CUISINE RESTAURATION

HYBRID WEAR collarless women's chef jacket:  
Crossed front breastplate and V-neckline.

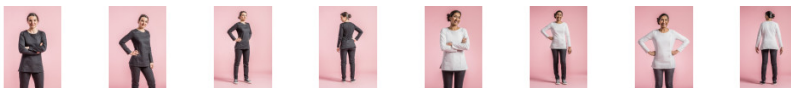
Pen pocket on left sleeve.

Side slits.

Front breastplate and lower back : 50% polyester  
50% cotton in WHITE / 65% polyester 35% cotton in  
BLACK, the rest in knit 60% cotton 40% polyester.

Available with short or long sleeves from size 00 to  
6.

Colors : WHITE / BLACK Men's version (short sleeves  
only): ZEST



**Size:** XS T0 T1 T2 T3 T4 T5 T6

**features:** long sleeve

**Washing tips:**



TECHNOLOGIE  
**HYBRID**  
®WEAR

The HYBRID WEAR concept consists of mixing together  
different fabrics in order to create a unique garment: it's  
the perfect fall of a polyester cotton warp and weft weave  
coupled with the absolute comfort of a non-deformable  
technical jersey fabric.

